

# White Paper: Automating SME Financial Validation with AI

Where agentic AI meets audit-level accuracy



## Industry Context

- Banking / Financial Services sector in the Middle East, serving a leading regional bank with complex SME partner networks.

## The Challenge

- Manual verification of SME partner financials at year-end. Analysts manually compared year-over-year metrics and flagged anomalies—a time-intensive and inconsistent process.



# AI Solution: Dual-LLM Agentic System

We built a fully agentic AI workflow to automate end-of-year SME financial validation, leveraging a sophisticated dual-LLM architecture that orchestrates multi-step reasoning with continuous feedback loops.



## LLM-1: Extraction

Analyzes balance sheets, statements, and text-heavy reports to extract key financial indicators using analytical tools.



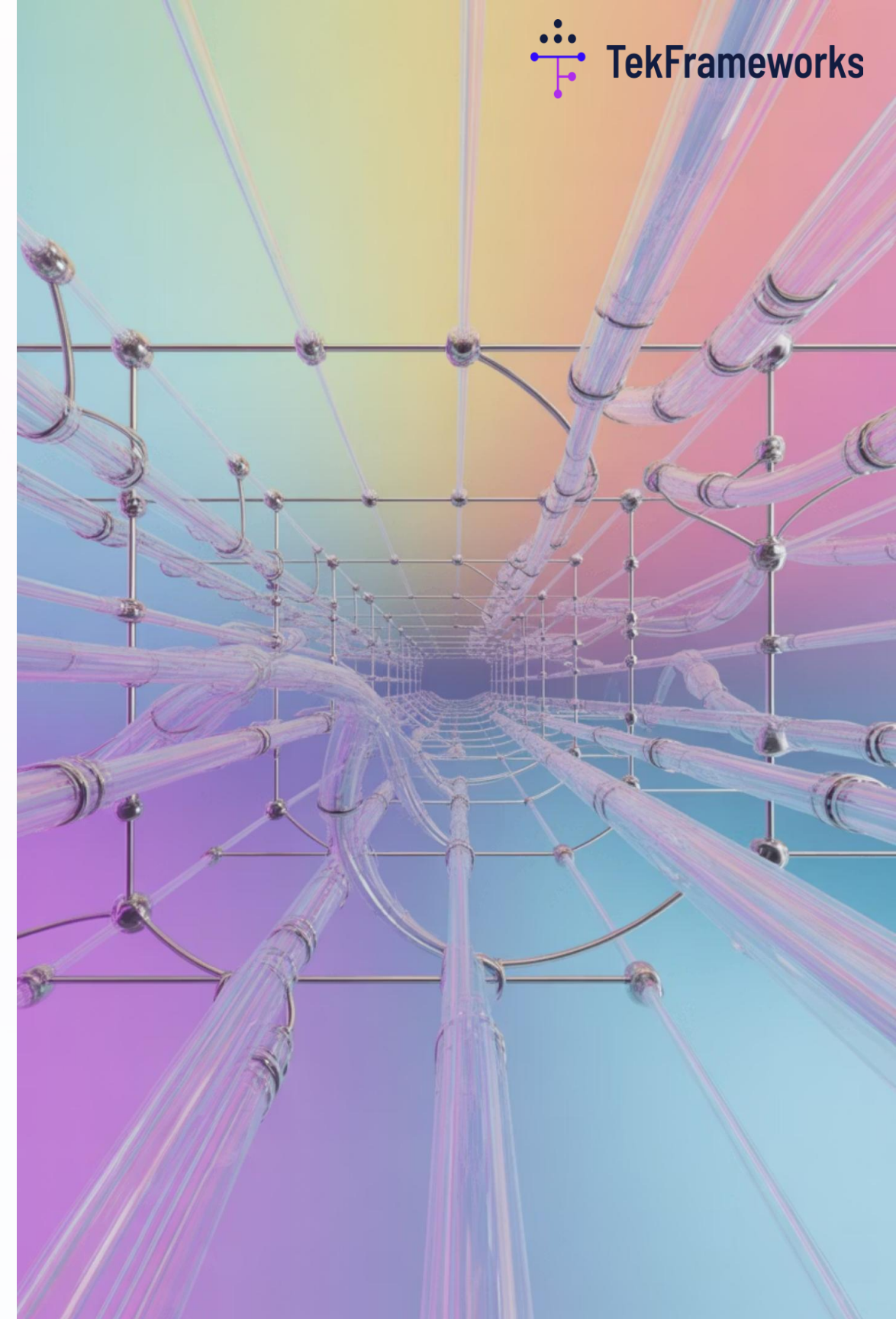
## LLM-2: Validation

Critiques, validates, and refines extracted data for accuracy and consistency through iterative improvement.



## Human Oversight

Integrated output validation dashboard with source-linked references for audit traceability and compliance review.



# Transformative Impact & Business Value

100%

## Validation Accuracy

Achieved human-level accuracy in financial validation across all SME partner assessments.

30

## Days Saved

Reduced month-long manual verification process to same-day audit completion.

75%

## Effort Reduction

Drastically reduced analyst effort, freeing capacity for judgment-based reviews.

## Accelerated Compliance

Improved audit traceability and accelerated compliance cycle with full source documentation.

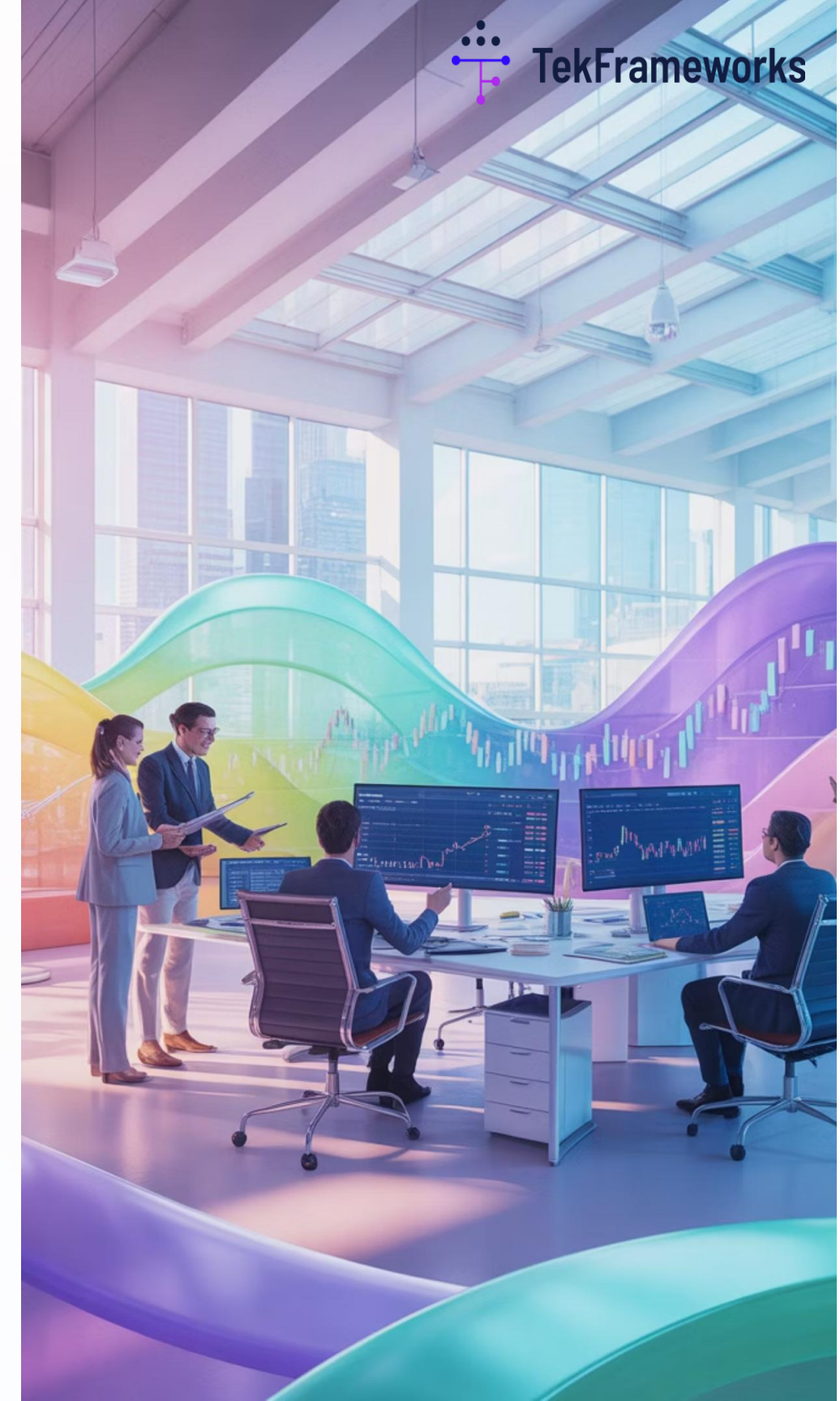
## Scalable Blueprint

Established a replicable framework for AI-assisted compliance across the BFSI sector.

## Process Transformation

Automated a process historically constrained by human bandwidth limitations.

Turning a month-long manual verification process into a same-day audit with full traceability.



# Ready to Redefine Financial Accuracy?

See how we help financial institutions achieve human-level precision and faster compliance through intelligent automation.

## Agentic Automation

- Dual-LLM system reads, validates, and summarizes financial data with source-linked traceability.

## Human-Level Precision

- Delivers 100% validation accuracy across SME financial reports.

## Faster Compliance

- Cuts review time from weeks to hours through AI-driven verification.

Contact us at [info@tekframeworks.com](mailto:info@tekframeworks.com)

**TekFrameworks turns AI ambition into measurable, responsible enterprise impact.**

 This document contains proprietary information of TekFrameworks and is intended solely for the recipient's internal use.